

# Product Summary Sheet

CL6

## Linear Fixed 100mA Constant Current LED Driver

### Applications:

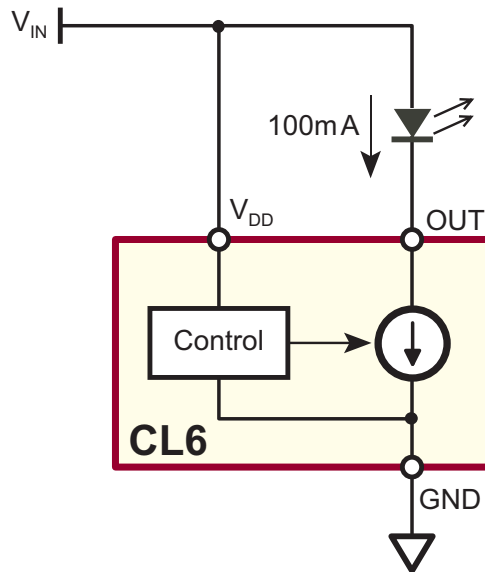
- ▶ Flashlights
- ▶ Speciality lighting
- ▶ Low voltage signage
- ▶ Low voltage lighting



TO220 (N5)



TO-252 (D-pak) (K4)



Typical Application Circuit

### Product Overview:

The CL6 is a fixed, linear current regulator designed for driving high brightness LEDs at 100mA from a nominal 12V, 24V, or 48V supplies. With a maximum rating of 90V, it is able to withstand transients without the need for additional transient protection circuitry.

The CL6 is offered in both D-pak and TO-220 packages. Tab on the TO-220 is ground, allowing heatsinking directly to a chassis without the need for electrically insulating spacers.

Overtemperature protection shuts off LED current when die temperature rises above 135°C nominal. Full LED current resumes when die temperature falls below 105°C nominal.

Features:	Benefits:
Built-in reverse polarity protection	No need for an external rectifier
90V max rating	Transient immunity
Overtemperature protection	Increases reliability, tolerates LED shorts
Tab ground	Allows direct heatsinking to chassis



062006

**Supertex inc.**

## Ordering Information / Availability

Part Number	Package Option	Samples	Lead Time
CL6K4-G	3-Lead TO-252 D-Pak	Now	4-5 Weeks ARO
CL6N5-G	3-Lead TO-220		

-G indicates the part is RoHS compliant (Green).



## Product Contact

For any questions regarding the CL6, please contact your local area Supertex sales office, or contact the main office in the US at:

Telephone: 800-222-8888  
 Fax: 408-222-4895  
 EMail: [mktg@supertex.com](mailto:mktg@supertex.com)  
 Website: [www.supertex.com](http://www.supertex.com)

**Supertex inc.**  
 1235 Bordeaux Drive, Sunnyvale, CA 94089