

**Product  
Summary  
Sheet**

**Simple, 220V, 20mA,  
Temperature-Compensated, Constant Current,  
LED Driver IC**

**Applications:**

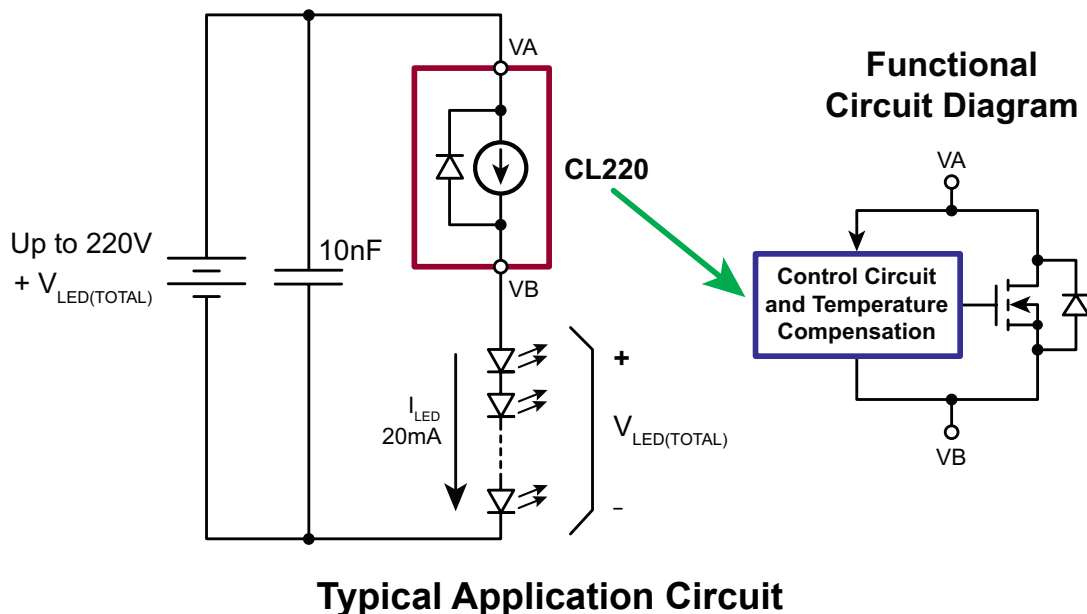
- ▶ Industrial lamp indicators
- ▶ Signage
- ▶ Accent lighting
- ▶ Constant current source
- ▶ Constant current sink



TO-252 D-PAK (K4)



TO-220 (N5)



**Product Overview:**

The Supertex CL220 is a high voltage, temperature-compensated, 20mA constant current regulator. The device operates at up to 220V, and is accurate to  $\pm 10\%$  over a 5.0 - 160V range. The device can be used as a two terminal constant current source or constant current sink.

A typical application for the CL220 is to drive LEDs with a constant current of 20mA. Multiple CL220s can also be used in parallel to provide higher currents such as 40mA, 60mA, 80mA, and so on. The device is available in the TO-252 (D-PAK) and TO-220 packages.

Features:	Benefits:
5.0 to 220V operating range	Accommodates a wide range of input voltages
Temperature-compensated current	Consistent brightness regardless of temperature
TO-220 and D-Pak packages	Simple circuit design, requires just a single bypass capacitor and allows for heatsinking



## Simple, 220V, 20mA, Temperature Compensated, Constant Current, LED Driver IC

### Ordering Information / Availability

Part Number	Package Option	Samples	Lead Time
CL220K4-G	TO-252 (D-PAK)	Now	4-6 wks ARO
CL220N5-G	TO-220	Now	4-6 wks ARO

-G indicates the part is RoHS compliant (Green).



### Product Contact

For any questions regarding the CL220, please contact your local area Supertex sales office, or contact the main office in the US at:

Telephone: 800-222-8888  
 Fax: 408-222-4895  
 EMail: [mktg@supertex.com](mailto:mktg@supertex.com)  
 Website: [www.supertex.com](http://www.supertex.com)

***Supertex inc.***  
 1235 Bordeaux Drive, Sunnyvale, CA 94089