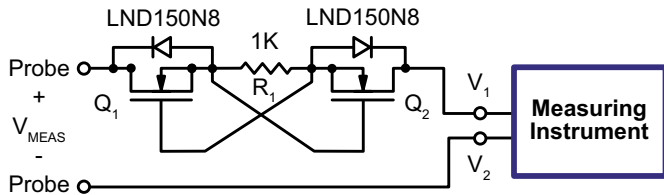


**±500 Volt Protection Circuit**

**Introduction**

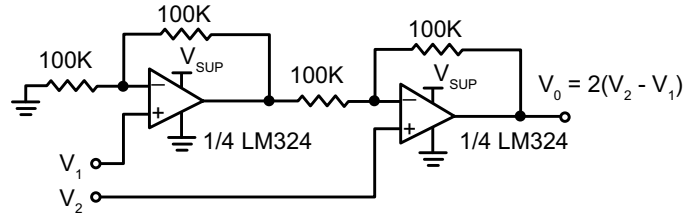
A ±500V protection circuit for low voltage high impedance measuring instruments is shown in Figure 1. The protection is accomplished by limiting the amount of current going into the measuring instrument. The circuit will protect against destructive high voltages inadvertently connected to the probes ( $V_{MEAS}$ ) of up to 500VDC of positive and negative polarity.



**Figure 1**

**Circuit Description**

The circuit consists of two transistors,  $Q_1$  and  $Q_2$ , and one resistor,  $R$ . Both  $Q_1$  and  $Q_2$  are Supertex LND150N8, 500V N-channel depletion mode MOSFETs with gate-to-source ESD protection in a SOT-89 surface mount package.  $Q_1$  and  $Q_2$  are configured back-to-back as two constant current sources with a nominal value of 1.0mA. Resistor  $R$  sets the current limiting value. Figure 2 is a typical low voltage high impedance measurement instrument. Figure 3 is a simplified equivalent circuit showing the protection scheme.



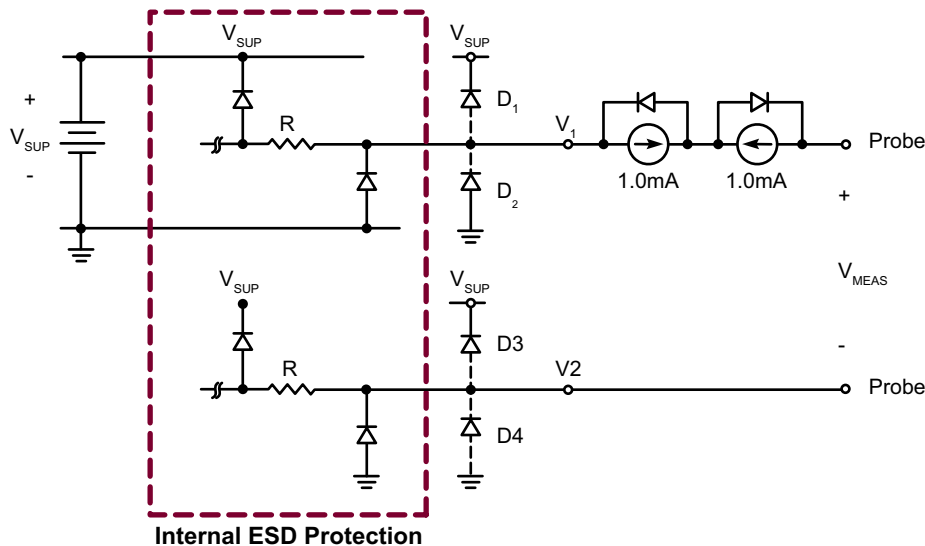
**Figure 2**

Under normal operation, the absolute value of  $V_{MEAS}$  is less than the supply voltage of the circuit.  $Q_1$  and  $Q_2$  will be fully on with a maximum guaranteed  $R_{DS}$  of 1.0KΩ. Since the instrument's input impedance is typically very high, say above 10MΩ, the additional 2.0KΩ series resistance from  $Q_1$  and  $Q_2$  will not affect measurement accuracy.

Under the fault condition, the absolute value of  $V_{MEAS}$  is greater than the supply voltage,  $Q_1$  limits the current to 1.0mA against large positive voltages and  $Q_2$  limits the current to -1.0mA against large negative voltages across  $V_{MEAS}$ .

For example, if  $V_{MEAS}$  is connected to ±500V,  $Q_1$  and  $Q_2$  will limit the input current to ±1.0mA causing the input voltage to the measurement instrument to clamp to 1.3V above its supply voltage (when  $R = 600\Omega$ ) and 0.7V below ground.

Typically the measuring instrument has ESD protection diodes connected from both probes to its power supply and ground. The ESD protection diodes can usually handle 1.0mA continuously. In case there are no ESD diodes provided, external diodes  $D_1$ ,  $D_2$ ,  $D_3$ , and  $D_4$  can be added.



**Figure 3**

### Calculation for Resistor Value

For a current limiting value of  $\pm 1.0\text{mA}$ , R can be approximated by the following equation:

$$R_1 = \frac{V_{GS(OFF)}}{I_D} \cdot (\sqrt{I_D / I_{DSS}} - 1)$$

where,

- $I_D$  = desired constant current value,
- $V_{GS(OFF)}$  = pinch-off voltage, and
- $I_{DSS}$  = saturation current at  $V_{GS} = 0V$ .

$V_{GS(OFF)}$  and  $I_{DSS}$  are device characteristics and will vary from lot to lot. Actual constant current values are not critical as long as the power dissipation of the LND1 is less than 600mW.

$$P_{DISS} = 600\text{mW} = (\text{constant current value})(\text{max. input voltage})$$

Figures 4A and 4B are pictures of current due to  $V_{MEAS}$  vs.  $V_{MEAS}$  voltage of the actual circuit.  $R_1$  was chosen to be  $1.0K\Omega$ .

### Conclusion

The high voltage protection circuit is ideal for both bench measurement and handheld measurement instruments. It is simple, reliable and cost effective. It eliminates the possibility of input damage to very sensitive and expensive high impedance devices within the measurement instrument.

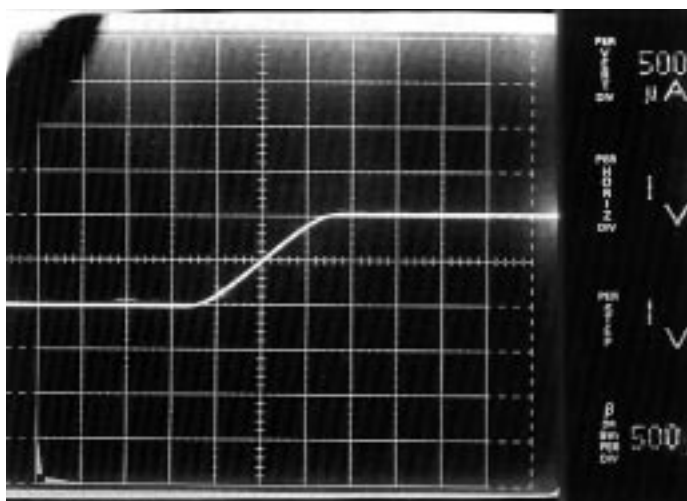


Figure 4A

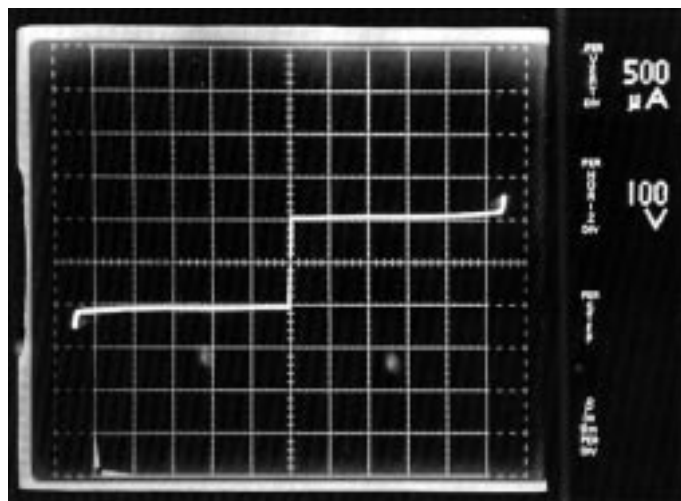


Figure 4B

Supertex inc. does not recommend the use of its products in life support applications, and will not knowingly sell them for use in such applications unless it receives an adequate "product liability indemnification insurance agreement." Supertex inc. does not assume responsibility for use of devices described, and limits its liability to the replacement of the devices determined defective due to workmanship. No responsibility is assumed for possible omissions and inaccuracies. Circuitry and specifications are subject to change without notice. For the latest product specifications refer to the Supertex inc. website: <http://www.supertex.com>.